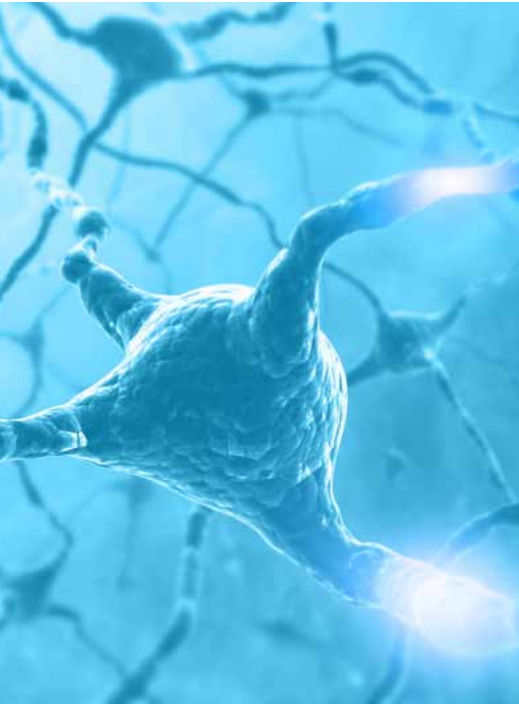


For more comprehensive information or to discuss complex patients, please contact one of our TPS Pharmacists at 1-877-608-4995



Because life is meant to be lived.



Total Pain Solutions

2250 Shipyard Blvd.
Suite 11
Wilmington, NC 28403
910.442.2056
f: 910.442.2057
tf: 877.442.2056

Mailing Address

P.O. Box 1829
Gardendale, AL 35071

www.totalpainrx.com

Active Ingredients and Their Uses

- Amantadine-** NMDA receptor antagonist. Risk of toxicity is low. Not a controlled medication.
- Amitriptyline-** Tri-cyclic antidepressant . Has shown benefit in reducing neuropathic pain. Could possibly cause sedation.
- Baclofen-** Effective muscle relaxant and antispasmodic agent that works well for pain relief. Possibly works by decreasing excitatory neurotransmitter release.
- Bupivacaine-** Local anesthetic with longer duration of action over Lidocaine.
- Clonidine-** Stimulates alpha-adrenoreceptors in the brain resulting in a reduction in sympathetic outflow from the CNS.
- Cyclobenzaprine-** Muscle relaxant. Structurally related to the 1st gen tricyclic antidepressants and may have similar analgesic properties.
- Diclofenac-** Non-steroidal anti-inflammatory agent (NSAID).
- Gabapentin-** Has shown benefit in relieving nerve pain. Acts by mimicking GABA an inhibitory neurotransmitter.
- Imipramine-** Tri-cyclic antidepressant . Lower risk of causing sedation.
- Ketamine-** Potent NMDA receptor antagonist. Has proven beneficial for neuropathic pain relief. Schedule III medication.
- Ketoprofen-** Non-steroidal anti-inflammatory (NSAID). Works well for pain due to torn muscles.
- Lidocaine-** Local anesthetic. Shorter duration of action than bupivacaine.
- Nifedipine-** Calcium channel blocker which provides an anti-ischemic effect by blocking calcium influx into cells, resulting in decrease vascular tone and increased blood flow.
- Verapamil-** Calcium channel blocker. Has antifibrogenic properties for use in patients with fibrosis, scarring, strictures and adhesions.

For more comprehensive information or to discuss complex patients, please contact one of our TPS Pharmacists at 1-877-608-4995



Because life is meant to be lived.

MAY BE EFFECTIVE FOR:

FORMULATIONS

Arthritis -OA / RA
Musculoskeletal Pain / Muscle Spasms
Plantar Fasciitis
Tendonitis
TMJ

DBBCG

(Diclofenac 5%, Baclofen 2%, Bupivacaine 1%, Cyclobenzaprine 2%, Gabapentin 6%)

Carpal Tunnel Syndrome
Chronic Lumbar and Cervical Radiculopathy
Tarsal Tunnel Syndrome

KBBCDG

(Ketamine 10%, Baclofen 2%, Bupivacaine 1%, Cyclobenzaprine 2%, Diclofenac 5%, Gabapentin 6%)

Chemo Induced Peripheral Neuropathy

KBGN

(Ketamine 10%, Baclofen 2%, Gabapentin 6%, Nifedipine 2%)

Acute Post Surgical Pain / Fibrosis Issues

KBGV

(Ketamine 10%, Baclofen 2%, Gabapentin 6%, Verapamil 6%)

Myofascial Pain, Musculoskeletal Pain w/spasms

KCBL

(Ketoprofen 15%, Cyclobenzaprine 2%, Baclofen 2%, Lidocaine 5%)

Post Herpetic Neuralgia - Acute

KCDGL

(Ketamine 10%, Clonidine 0.2%, DDG 0.5%, Gabapentin 6%, Lidocaine 5%)

Post Herpetic Neuralgia - Chronic, Trigeminal Neuralgia

KCGIL

(Ketamine 10%, Carbamazepine 2%, Gabapentin 6%, Imipramine 3%, Loperamide 3%)

CRPS / RSD
Phantom Limb Pain
Trigeminal Neuralgia

KCIGL

(Ketamine 10%, Clonidine 0.2%, Imipramine 3%, Gabapentin 6%, Lidocaine 5%)

Fibromyalgia

KDG

(Ketamine 10%, Diclofenac 5%, Gabapentin 6%)

General Neuropathy

KGCL

(Ketamine 10%, Gabapentin 6%, Clonidine 0.2%, Lidocaine 5%)

Diabetic Peripheral Neuropathy

KIGN

(Ketamine 10%, Imipramine 3%, Gabapentin 6%, Nifedipine 2%)

Gout

(Diclofenac 5%, Bupivacaine 1%, Colchicine 0.05%, Indomethacin 2%, Loperamide 1%, TAC 0.1%)